

**TECHNICAL MANUAL**

**DIRECT SUPPORT MAINTENANCE REPAIR PARTS**

**AND SPECIAL TOOLS LISTS**

**(INCLUDING DEPOT MAINTENANCE REPAIR PARTS AND SPECIAL TOOLS)**

**FOR**

**TEST SET, LASER INFRARED OBSERVATION DEVICE**

**TS-3620/GVS-5 (NSN 5860-01-052-9477)**

THIS PUBLICATION HAS BEEN PRINTED BY THE  
UNITED STATES ARMY PUBLICATIONS DISTRIBUTION  
CENTER, ST. LOUIS, MISSOURI, TO MEET  
YOUR NEEDS ON A TIMELY BASIS.

---

**HEADQUARTERS, DEPARTMENT OF THE ARMY**

**SEPTEMBER 1979**

**DIRECT SUPPORT MAINTENANCE REPAIR PARTS  
 AND SPECIAL TOOLS LISTS  
 (INCLUDING DEPOT MAINTENANCE REPAIR PARTS AND SPECIAL TOOLS)  
 FOR  
 TEST SET, LASER INFRARED OBSERVATION DEVICE  
 TS-3620/GVS-5 (NSN 5860-01-052-9477)**

*Current as of 4 May 1979*

**REPORTING OF ERRORS**

You can help improve this manual. If you find any mistakes or if you know of a way to improve the procedures, please let us know. Mail your letter, DA Form 2028 (Recommended Changes to Publications and Blank Forms), or DA Form 2028-2 located in back of this manual direct to Commander, US Army Communications and Electronics Materiel Readiness Command, ATTN: DRSEL-ME-MQ, Fort Monmouth, NJ 07703.

In either case, a reply will be furnished direct to you.

Table of Contents

	Page	Illus Figure
SECTION I. Introduction .....	1	
II. Repair Parts List .....	5	
Group 00 Test Set, Laser Infrared Observation Device TS-3620/GVS-5 .....	5	1
01 Electronic Test Set Assembly .....	9	2
0101 Electronic Board Assembly A2 .....	13	3
0102 Power Supply Board Assembly A3 .....	15	4
0103 Transmitter/Receiver Assembly A1 .....	17	5
010301 Housing Assembly, Optics (See next assembly)		
010302 Transmitter/Receiver Board A1A1 .....	19	6
02 Cable Assembly, Adapter .....	21	7
03 Combination Case .....	23	8
04 Alignment Bracket Assembly .....	25	9
05 Cable Assembly, AC Power (No parts authorized)		
SECTION III. Special Tools List (Not applicable)		
IV. National Stock Number and Part Number Index .....	26	

## SECTION I

### INTRODUCTION

---

#### 1. Scope

This manual lists spares and repair parts; special tools: special test, measurement, and diagnostic equipment (TMDE), and other special support equipment required for performance of direct support maintenance of the TS-3620/GVS-5. It authorizes the requisitioning and issue of spares and repair parts as indicated by the source and maintenance codes.

#### 2. General

This Repair Parts and Special Tools List is divided into the following sections:

*a. Section II. Repair Parts List.* A list of spares and repair parts authorized for use in the performance of maintenance. The list also includes parts which must be removed for replacement of the authorized parts. Parts lists are composed of functional groups in numeric sequence, with the parts in each group listed in figure and item number sequence.

*b. Section III. Special Tools List.* Not applicable.

*c. Section IV. National Stock Number and Part Number Index.* A list, in National item identification number (NIIN) sequence, of all National stock numbers (NSN) appearing in the listings, followed by a list, in alphameric sequence, of all part numbers appearing in the listings. National stock numbers and part numbers are cross-referenced to each illustration figure and item number appearance.

#### 3. Explanation of Columns

*a. Illustration.* This column is divided as follows:

(1) *Figure number.* Indicates the figure number of the illustration on which the item is shown.

(2) *Item number.* The number used to identify item called out in the illustration.

*b. Source, Maintenance, and Recoverability (SMR) Codes.*

(1) *Source code.* Source codes indicate the manner of acquiring support items for maintenance, repair, or overhaul of end items. Source codes are entered in the first and second positions of the Uniform SMR Code format as follows:

*Code*

*Definition*

PA—Item procured and stocked for anticipated or known usage.

XA—Item is not procured or stocked because the requirements for the item will result in the replacement of the next higher assembly.

XD—A support item that is not stocked. When required, item will be procured through normal supply channels.

#### NOTE

Cannibalization or salvage maybe used as a source of supply for any items source coded above except those coded XA and aircraft support items as restricted by AR 700-42.

(2) *Maintenance code.* Maintenance codes are assigned to indicate the levels of maintenance authorized to USE and REPAIR support items. The maintenance codes are entered in the third and fourth positions of the Uniform SMR Code format as follows:

(a) The maintenance code entered in the third position will indicate the lowest maintenance level authorized to remove, replace, and use the support item. The maintenance code entered in the third position will indicate one of the following levels of maintenance:

*Code*

*Application/Explanation*

O—Support item is removed, replaced, used at the organizational level.

F—Support item is removed, replaced, used at the direct support level.

D—Support items that are removed, replaced, used at depot, mobile depot, specialized repair activity only.

(b) The maintenance code entered in the fourth position indicates whether the item is to be repaired and identifies the lowest maintenance level with the capability to perform complete repair (i.e., all authorized maintenance functions). This position will contain one of the following maintenance codes:

*Code*

*Application/Explanation*

F—The lowest maintenance level capable of complete repair of the support item is the direct support level.

<i>Code</i>	<i>Application/Explanation</i>
-------------	--------------------------------

D—The lowest maintenance level capable of complete repair of the support item is the depot level.

Z—Nonreparable. No repair is authorized.

(3) *Recoverability code*. Recoverability codes are assigned to support items to indicate the disposition action on unserviceable items. The recoverability code is entered in the fifth position of the Uniform SMR Code format as follows:

<i>Recoverability codes</i>	<i>Definition</i>
-----------------------------	-------------------

Z—Nonreparable item. When unserviceable, condemn and dispose at the level indicated in position 3.

F—Reparable item. When uneconomically repairable, condemn and dispose at the direct support level.

D—Reparable item. When beyond lower level repair capability, return to depot. Condemnation and disposal not authorized below depot level.

*c. National Stock Number*. Indicates the National stock number assigned to the item and will be used for requisitioning purposes.

*d. Part Number*. Indicates the primary number used by the manufacturer (individual, company, firm, corporation, or Government activity), which controls the design and characteristics of the item by means of its engineering drawings, specifications, standards, and inspection requirements to identify an item or range of items.

**NOTE**

When a stock numbered item is requisitioned, the repair part received may have a different part number than the part being replaced.

*e. Federal Supply Code for Manufacturer (FSCM)*. The FSCM is a 5-digit numeric code listed in SB 708-42 which is used to identify the manufacturer, distributor, or Government agency, etc.

*f. Description*. Indicates the Federal item name and, if required, a minimum description to identify the item.

*g. Unit of Measure (U/M)*. Indicates the standard of the basic quantity of the listed item as used in performing the actual maintenance function. This measure is expressed by a two-character alphabetical abbreviation (e.g., ea. in, pr, etc). When the unit of measure differs from the unit of issue, the lowest unit of issue that will satisfy the required units of measure will be requisitioned.

*h. Quantity Incorporated in Unit*. Indicates the

quantity of the item used in the breakout shown on the illustration figure, which is prepared for a functional group, subfunctional group, or an assembly.

**4. Special Information**

*a.* The following publications pertain to the TS-3620/GVS-5 and its components:

TM 11-6625-2684-12, Test Set, Laser Infrared Observation Device TS-3620/GVS-5

TM 11-6625-2684-20P, Test Set, Laser Infrared Observation Device TS-3620/GVS-5

TM 11-6625-2684-30, Test Set, Laser Infrared Observation Device TS-362WGVS-5

*b.* National stock numbers (NSN's) that are missing from P source coded items have been applied for and will be added to this TM by future change/revision when they are entered in the Army Master Data File (AMDF). Until the NSN's are established and published, submit exception requisitions to: Commander, US Army Communications and Electronics Materiel Readiness Command, ATTN: DRSEL-MM, Fort Monmouth, NJ 07703 for the part required to support your equipment.

**5. How to Locate Repair Parts**

*a.* When National stock number or part number is unknown.

(1) *First*. Using the table of contents, determine the functional group within which the item belongs. This is necessary since illustrations are prepared for functional groups and listings are divided into the same groups.

(2) *Second*. Find the illustration covering the functional group to which the item belongs.

(3) *Third*. Identify the item on the illustration and note the illustration figure and item number of the item.

(4) *Fourth*. Using the Repair Parts Listing, find the figure and item number noted on the illustration.

*b.* When National stock number or part number is known.

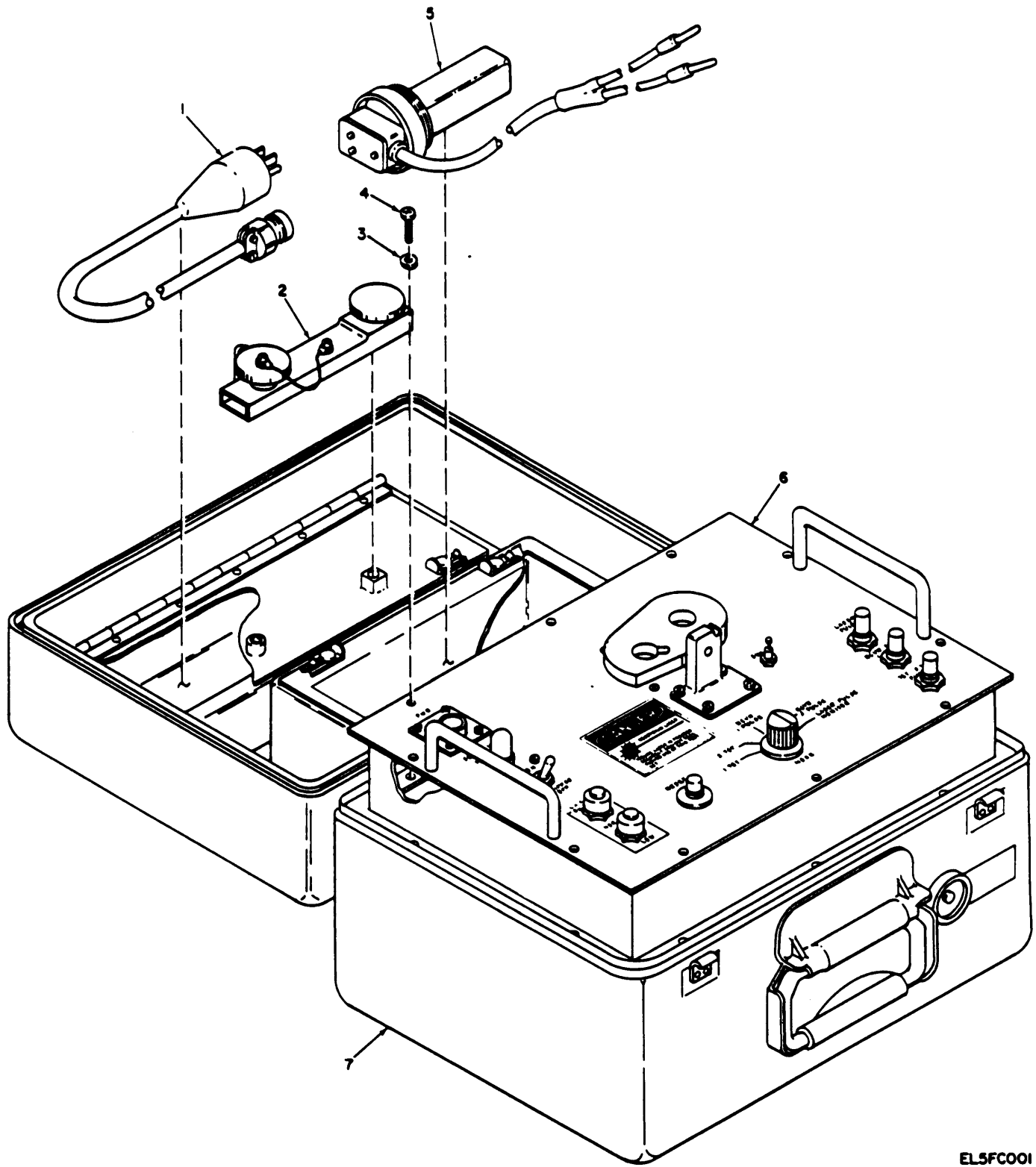
(1) *First*. Using the Index of National Stock Numbers and Part Numbers, find the pertinent National stock number or part number. This index is in NIIN sequence followed by a list of part numbers in alphameric sequence, cross-referenced to the illustration figure number and item number.

(2) *Second*. After finding the figure and item number, locate the figure and item number in the repair parts list.

**6. Abbreviations**

Not applicable.

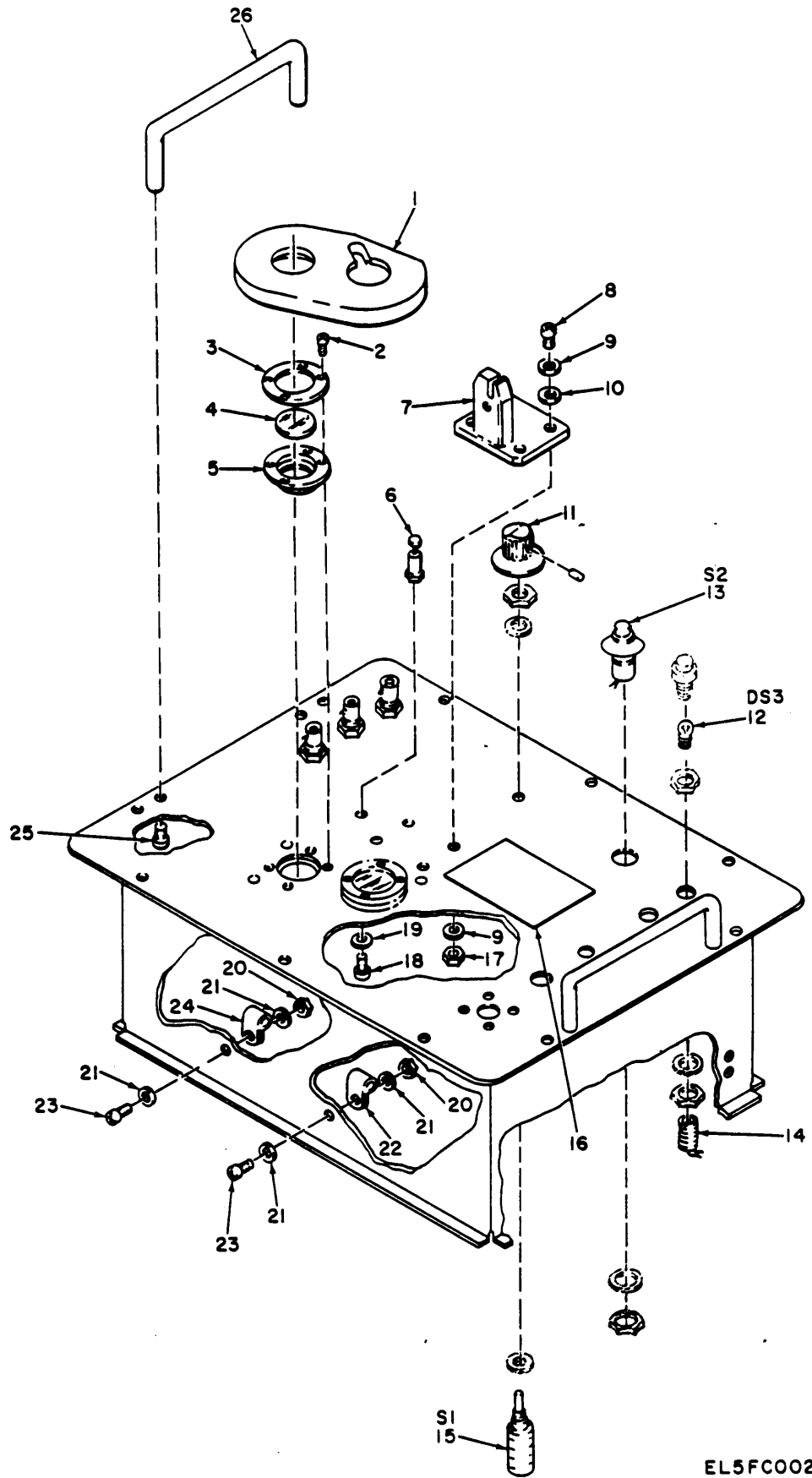
(Next printed page is 4)



EL5FC001

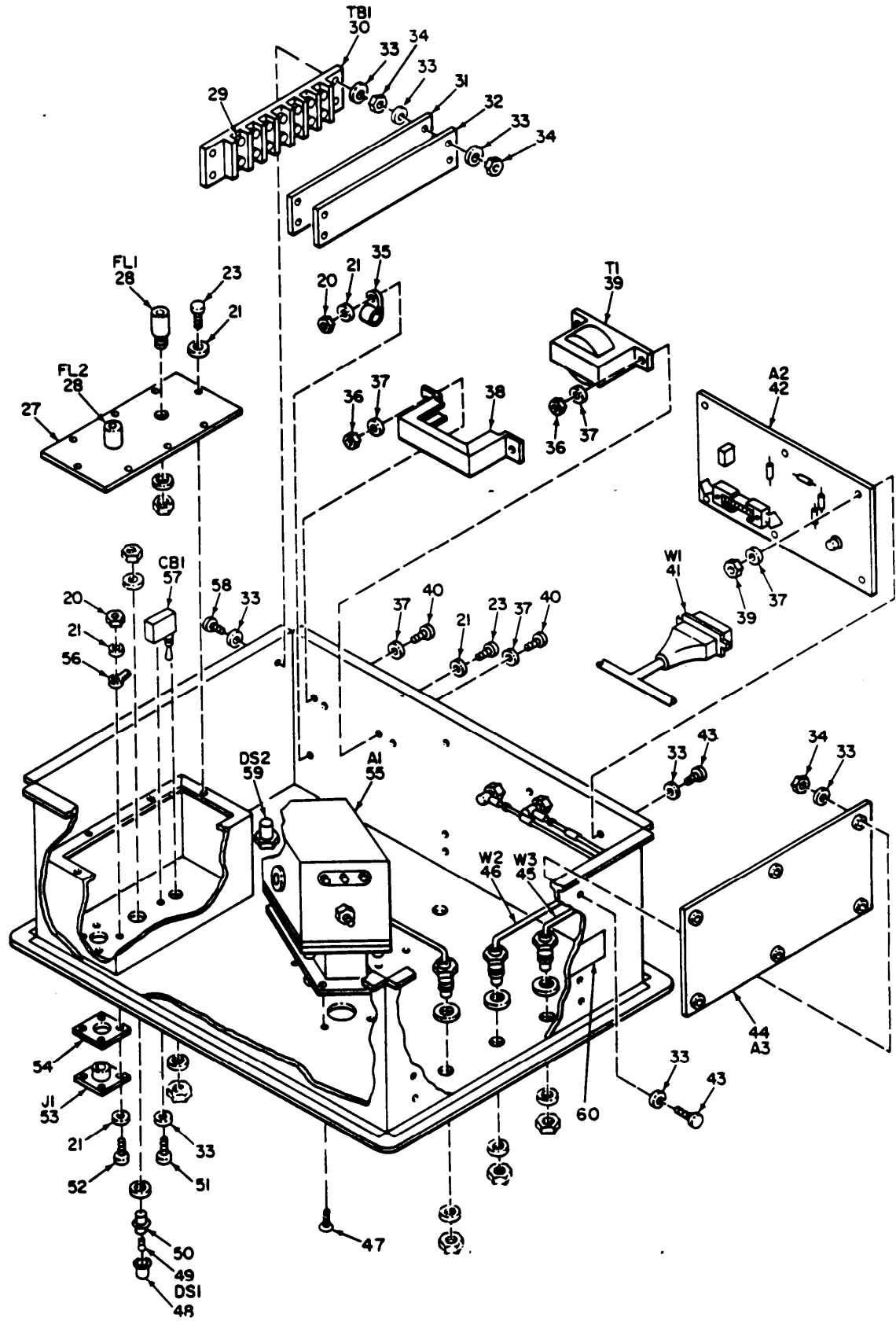
Figure 1. Test Set, Laser Infrared Observation Device TS-3620/GVS-5

SECTION II						TM11-6625-2684-30P		
(1)	(2)	(3)	(4)	(5)	(6)	(7)	(8)	
ILLUSTRATION								
(A)	(B)	NATIONAL			DESCRIPTION		QTY	
FIG	ITEM	STOCK	PART	FSCM		USABLE ON CODE	INC	
NO	NO	NUMBER	NUMBER			U/M	IN	
							UNIT	
					GROUP 00 TEST SET, LASER INFRARED			
					OBSERVATION DEVICE TS-3620/GVS-5			
1	1	PAOZZ	6150-01-058-6591	MS2548-2	96906		EA 1	
1	2	PAOFF	5860-01-070-8990	SM-D-852374	80063		EA 1	
1	3	PAFZZ	5310-00-619-1148	MS15795-808	96906		EA 10	
1	4	PAFZZ	5305-00-403-3463	NAS1635-3-12	80205		EA 10	
1	5	PAOFF	5860-01-070-8989	SM-D-852433	80063		EA 1	
1	6	XAFDD		SM-D-852483	80063		EA 1	
1	7	XDFFF		SM-D-852384	80063		EA 1	



EL5FC002

Figure 2. Electronic Test Set Assembly (Sheet 1 of 2).



(ASSEMBLY ROTATED 180 DEGREES)

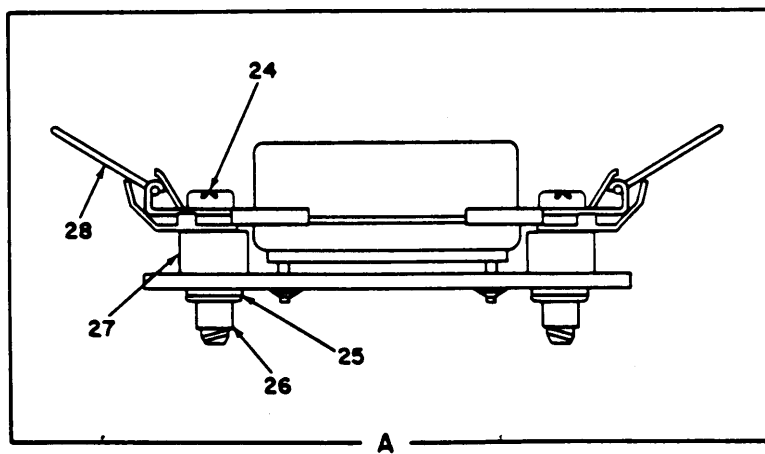
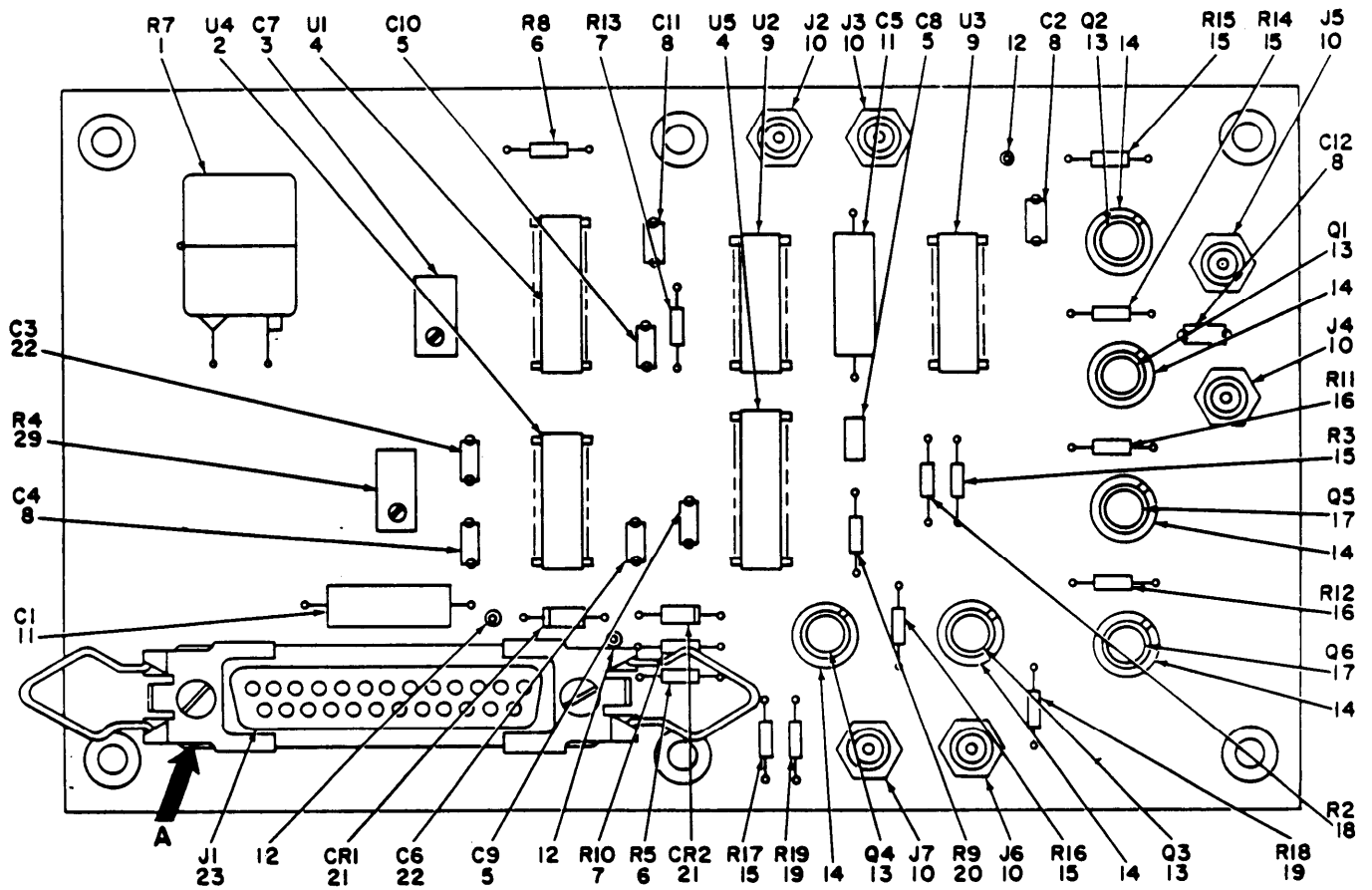
EL5FC003

Figure 2. Electronic Test Set Assembly (Sheet 2 of 2).



SECTION II						TM11-6625-2684-30P			
(1)	(2)	(3)	(4)	(5)	(6)	(7)	(8)		
ILLUSTRATION		NATIONAL	PART	FSCM	DESCRIPTION	USABLE ON CODE	U/M	QTY	INC
(A)	(B)	STOCK	NUMBER					IN	IN
FIG	ITEM	NUMBER	NUMBER					UNIT	
NO	NO								
GROUP 01 ELECTRONIC TEST SET ASSEMBLY									
2	1	PAFZZ	5860-01-074-6293	SM-C-852375	80063	SHROUD, OPTICAL		EA	1
2	2	PAFZZ	5305-00-814-1707	NAS662C2R4	80205	SCREW, MACHINE		EA	8
2	3	PAFZZ	5365-01-070-8071	SM-C-937798	80063	RING, RETAINER, FILTE		EA	2
2	4	PAFZZ	5860-01-070-8130	SM-A-852072	80063	WINDOW, OPTICAL INST		EA	2
2	5	PAFZZ	5365-01-070-8072	SM-C-937799	80063	RING, RETAINER, FILTE		EA	2
2	6	PAFZZ	5940-01-075-0050	SM-B-852424	80063	TERMINAL, SOLDER		EA	1
2	7	XDFZZ		SM-C-852395	80063	POST, MTG		EA	1
2	8	PAFZZ	5305-00-403-3463	NAS1635-3-12	80205	SCREW, MACHINE		EA	4
2	9	PAFZZ	5310-00-619-1148	MS15795-808	96906	WASHER, FLAT		EA	8
2	10	PAFZZ	5310-00-543-5933	MS35333-73	96906	WASHER, LOCK		EA	4
2	11	PAZZZ	5355-00-682-6753	MS91528-1F1B	96906	KNOB		EA	1
2	12	PAZZZ	6240-00-155-7857	MS25237-328	96906	LAMP, INCANDESCENT		EA	2
2	13	PAFZZ	5930-00-578-2353	MS25089-4CR	96906	SWITCH, PUSH		EA	1
2	14	PAFZZ	6210-00-519-0448	MS25041-6	96906	LIGHT, INDICATOR		EA	1
2	15	PAFZZ		SM-D-852416	80063	SWITCH, ROTARY		EA	1
2	16	PAZZZ	7690-01-071-9347	SM-C-882399	80063	LABEL		EA	1
2	17	PAFZZ	5310-00-894-3638	NAS1291C3M	80205	NUT, SELF-LOCKING, EX		EA	4
2	18	PAFZZ	5305-00-054-5648	MS51957-14	96906	SCREW, MACHINE		EA	1
2	19	PAFZZ	5310-00-550-3715	MS35333-70	96906	WASHER, LOCK		EA	1
2	20	PAFZZ	5310-00-845-2359	NAS1291C04M	80205	NUT, SELF-LOCKING, EX		EA	14
2	21	PAFZZ	5310-00-595-6211	MS15795-803	96906	WASHER, FLAT		EA	36
2	22	XDFZZ	5340-00-988-3210	MS25281R4	96906	CLAMP, LOOP		EA	1
2	23	PAFZZ	5305-00-054-5651	MS51957-17	96906	SCREW, MACHINE		EA	18
2	24	XDFZZ	5340-00-753-3456	MS25281R2	96906	CLAMP, LOOP		EA	3
2	25	PAFZZ	5305-00-051-0227	MS24693C272	96906	SCREW, MACHINE		EA	4
2	26	XDFZZ	5340-00-060-5386	MS39087-3	96906	HANDLE BOW		EA	2
2	27	XDFZZ		SM-C-852414	80063	COVER, FILTER		EA	1
2	28	PAFZZ	5915-01-068-0995	M15733-27-0017	81349	FILTER, RADIO FREQUE		EA	2
2	29	XDFZZ	5940-00-283-5280	MS25036-106	96906	TERMINAL, LUG		EA	10
2	30	PAFZZ	5940-00-983-6051	37TB10	81349	TERMINAL BOARD		EA	1
2	31	XDFZZ		SM-B-955591	80063	INSULATOR, TB		EA	1
2	32	PAFZZ	5940-01-070-8099	SM-C-852425	80063	COVER, TERMINAL BOAR		EA	1
2	33	PAFZZ	5310-00-722-5998	MS15795-805	96906	WASHER, FLAT		EA	34
2	34	PAFZZ	5310-00-878-9518	NAS1291C06M	80205	NUT, SELF-LOCKING, EX		EA	16
2	35	XDFZZ	5340-00-543-3931	MS25281R3	96906	CLAMP, LOOP		EA	6
2	36	PAFZZ	5310-00-845-5030	NAS1291C08M	80205	NUT, SELF-LOCKING, EX		EA	4
2	37	PAFZZ	5310-00-880-5978	MS15795-807	96906	WASHER, FLAT		EA	8
2	38	PAFZZ	5340-01-070-8988	SM-C-852423	80063	BRACKET, TRANSFORMER		EA	1
2	39	PAFZZ		SM-C-852417	80063	TRANSFORMER, POWER, S		EA	1

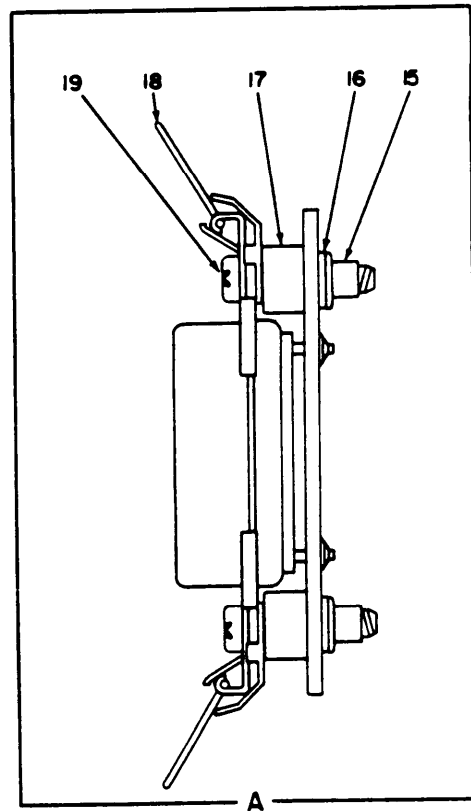
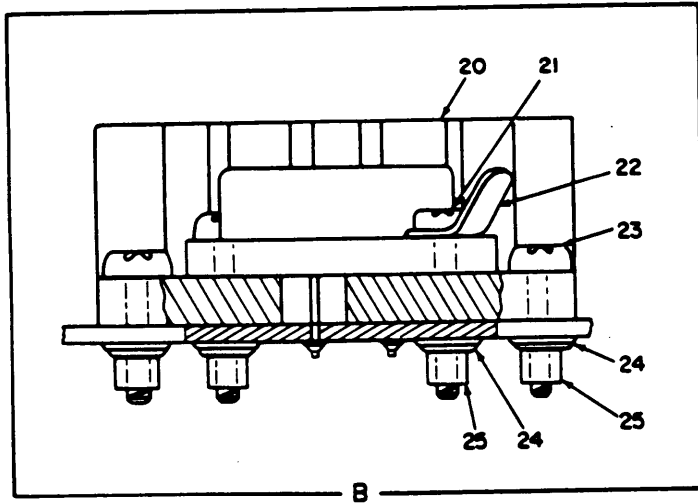
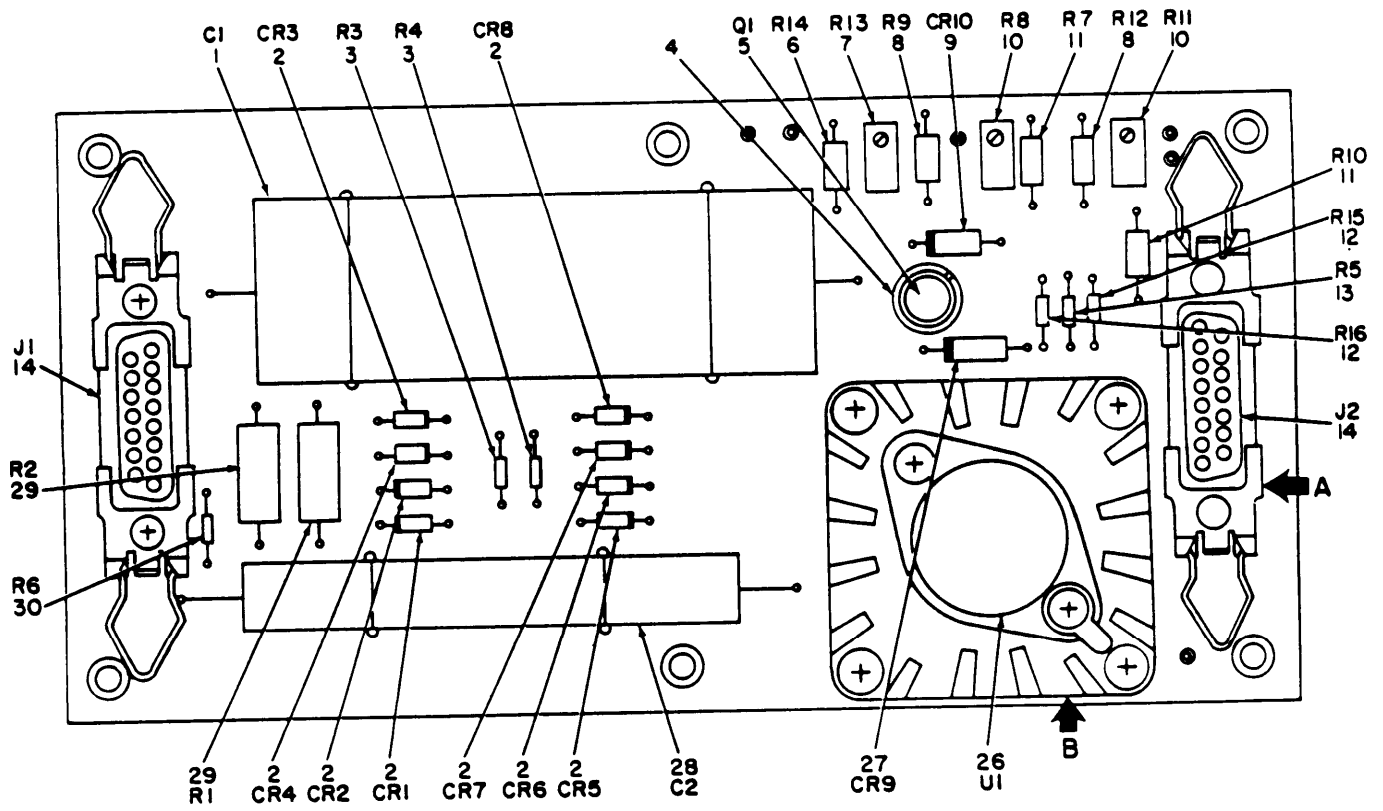
SECTION II (1) ILLUSTRATION		(2)	(3)	(4)	(5)	TM11-6625-2684-30P (6)	(7)	(8)
(A) FIG NO	(B) ITEM NO	SMR CODE	NATIONAL STOCK NUMBER	PART NUMBER	FSCM	DESCRIPTION	USABLE ON CODE	QTY INC IN UNIT
2	40	PAFZZ	5305-00-403-3465	NAS1635-08-10	80205	SCREW,MACHINE	EA	4
2	41	XDFZZ		SM-D-852371	80063	HARNES, CABLE	EA	1
2	42	PAFDD	5860-01-070-9134	SM-D-852381	80063	CIRCUIT CARD ASSEMB	EA	1
2	43	PAFZZ	5305-00-054-6656	MS51957-32	96906	SCREW,MACHINE	EA	12
2	44	PAFDD	5860-01-070-8155	SM-D-852378	80063	CIRCUIT CARD ASSEMB	EA	1
2	45	PAFZZ	5995-01-070-8107	SM-C-852377	80063	CABLE ASSEMBLY,RADI	EA	1
2	46	PAFZZ	5995-01-074-6332	SM-C-852385	80063	CABLE ASSEMBLY,RADI	EA	1
2	47	PADZZ	5305-00-079-5835	MS24693C50	96906	SCREW,MACHINE	EA	4
2	48	PAOZZ	6210-00-246-4888	LC33RN2	81349	LENS, LIGHT	EA	1
2	49	PAOZZ	6240-00-892-4420	MS25252C7A	96906	LAMP, GLOW	EA	1
2	50	PAFZZ	6210-00-400-2808	LH88-1	81349	LIGHT, INDICATOR	EA	1
2	51	PAFZZ	5305-00-054-6651	MS51957-27	96906	SCREW,MACHINE	EA	2
2	52	PAFZZ	5305-00-054-5652	MS51957-18	96906	SCREW,MACHINE	EA	4
2	53	PAFZZ	5935-00-726-0708	MS3102R10SL3P	96906	CONNECTOR, RECEPTACL	EA	1
2	54	PAFZZ	5330-00-903-7187	MS52000-2	96906	GASKET	EA	1
2	55	XDDDD		SM-D-852361	80063	XMT-RCV ASSY	EA	1
2	56	PAFZZ	5940-00-614-0537	MS35431-1	96906	TERMINAL, LUG	EA	1
2	57	PAFZZ		SM-D-852415	80063	CIRCUIT BREAKER	EA	1
2	58	PAFZZ	5305-00-054-6658	MS51957-34	96906	SCREW,MACHINE	EA	4
2	59	PAFZZ	6210-00-553-1076	MS25041-7	96906	LIGHT, INDICATOR	EA	1
2	60	PAOZZ		SM-C-955584	80063	LABEL	EA	1



EL5FC004

Figure 3. Electronic Board Assembly A2.

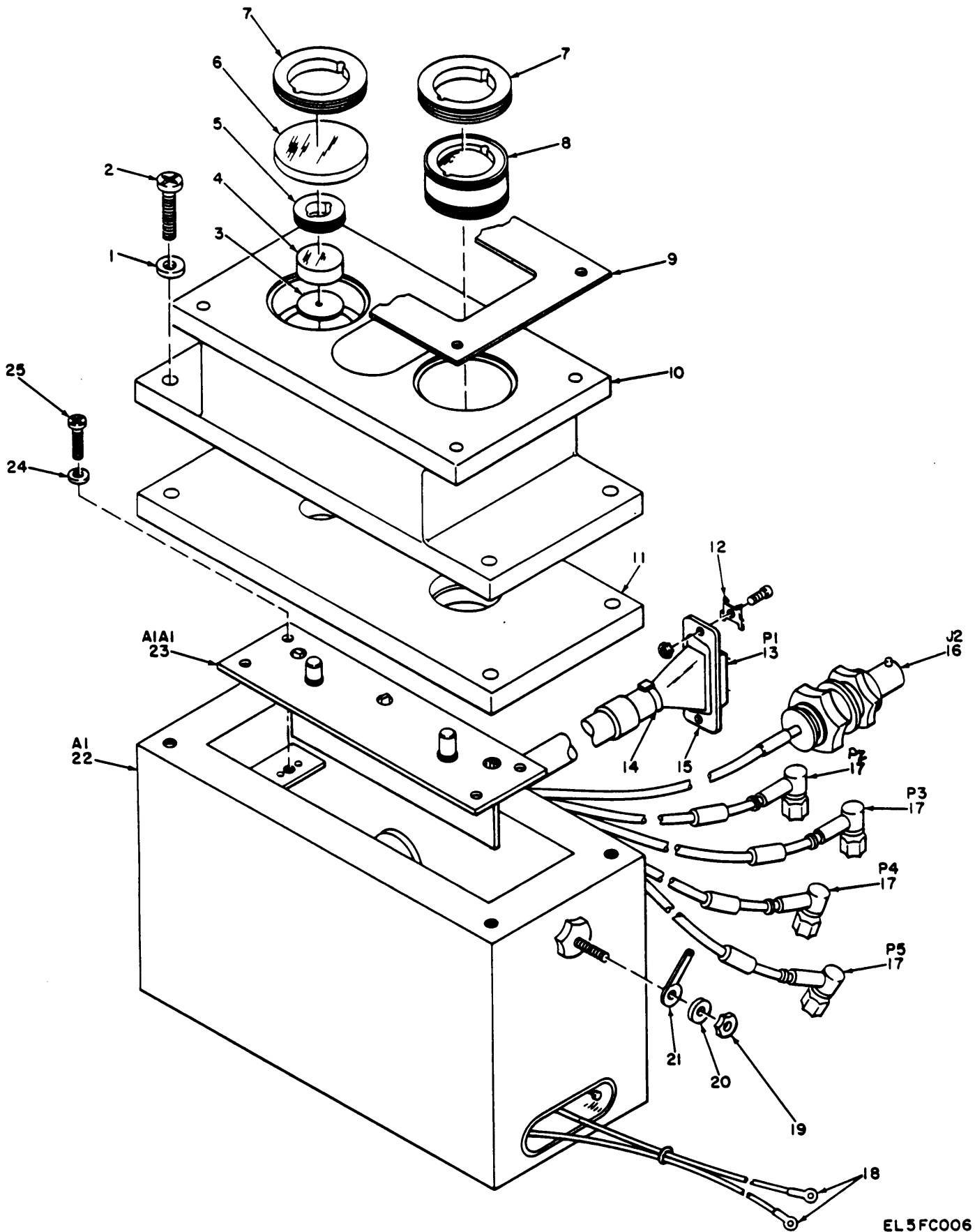
SECTION II						TM11-6625-2684-30P				
(1)	(2)	(3)	(4)	(5)	(6)	(7)	(8)			
ILLUSTRATION					DESCRIPTION		QTY			
(A)	(B)	NATIONAL	PART				INC			
FIG	ITEM	STOCK	NUMBER	FSCM		USABLE ON CODE	U/M	IN		
NO	NO	NUMBER	NUMBER					UNIT		
GROUP 0101 ELECTRONIC BOARD ASSEMBLY A2										
3	1	PADZZ 5910-00-594-7766	CMR07F103J0DM	81349	CAPACITOR, FIXED, MIC		EA	1		
3	2	PADZZ	SM-A-852359	80063	IC		EA	1		
3	3	PADZZ 5905-01-008-8429	M39015-3-010WM	81349	RESISTOR, VARIABLE, W		EA	1		
3	4	PADZZ 5962-00-348-2717	M38510-01203BEB	81349	MICROCIRCUIT, DIGITA		EA	2		
3	5	PADZZ	M39014-01-1213	81349	CAPACITOR, FIXED, CER		EA	3		
3	6	PADZZ 5905-01-036-1571	RCR05G103JM	81349	RESISTOR, FIXED, COMP		EA	2		
3	7	PADZZ 5905-01-036-1576	RCR05G203JM	81349	RESISTOR, FIXED, COMP		EA	2		
3	8	PADZZ 5910-01-027-1258	M39014-01-1473	81349	CAPACITOR, FIXED, CER		EA	4		
3	9	PADZZ 5962-00-318-2223	M38510-00104BCB	81349	MICROCIRCUIT, DIGITA		EA	2		
3	10	PADZZ	SM-B-852376	80063	CONNECTOR, PLUG, ELEC		EA	6		
3	11	PADZZ 5910-00-546-4948	M39003-01-2258	81349	CAPACITOR, FIXED, ELE		EA	2		
3	12	PADZZ 5940-00-913-8093	M55155-29-5	81349	TERMINAL, STUD		EA	3		
3	13	PADZZ 5961-00-925-3777	JAN2N2907A	81349	TRANSISTOR		EA	4		
3	14	PADZZ 5999-00-956-4973	10044DAP	07047	MOUNTING PAD, ELECTR		EA	6		
3	15	PADZZ 5905-01-036-3410	RCR05G102JM	81349	RESISTOR, FIXED, COMP		EA	5		
3	16	PADZZ 5905-00-197-0224	RCR05G511JR	81349	RESISTOR, FIXED, COMP		EA	2		
3	17	PADZZ 5961-00-226-8584	JAN2N2222	81349	TRANSISTOR		EA	2		
3	18	PADZZ 5905-00-180-8301	RCR05G101JM	81349	RESISTOR, FIXED, COMP		EA	1		
3	19	PADZZ 5905-00-568-6954	RCR05G330JM	81349	RESISTOR, FIXED, COMP		EA	2		
3	20	PADZZ 5905-00-481-5254	RCR05G363JM	81349	RESISTOR, FIXED, COMP		EA	1		
3	21	PADZZ 5961-00-938-1135	JAN1N4148	81349	SEMICONDUCTOR DEVIC		EA	2		
3	22	PADZZ 5910-01-027-1278	M39014-01-1455	81349	CAPACITOR, FIXED, CER		EA	2		
3	23	PADZZ 5935-00-593-9415	M24308-24-3	81349	CONNECTOR, RECEPTACL		EA	1		
3	24	PADZZ 5305-00-054-5652	MS51957-18	96906	SCREW, MACHINE		EA	2		
3	25	PADZZ 5310-00-716-5612	MS51859-2	96906	WASHER, FLAT		EA	2		
3	26	PADZZ 5310-00-845-2359	NAS1291C04M	80205	NUT, SELF-LOCKING, EX		EA	2		
3	27	PADZZ	SM-B-852358	80063	SPACER, SLEEVE		EA	2		
3	28	PADZZ 5340-00-232-9083	SM-C-852386	80063	LATCH SPRING		EA	2		
3	29	PADZZ 5905-00-594-2640	RJR24FW105P	81349	RESISTOR, VARIABLE, N		EA	1		



EL5FC005

Figure 4. Power Supply Board Assembly AS.

SECTION II (1) ILLUSTRATION		(2)	(3)	(4)	(5)	TM11-6625-2684-30P (6)	(7)	(8)
(A) FIG NO	(B) ITEM NO	SMR CODE	NATIONAL STOCK NUMBER	PART NUMBER	FSCM	DESCRIPTION	USABLE ON CODE	QTY INC IN UNIT
						GROUP 0102 POWER SUPPLY BOARD ASSEMBLY A3		
4	1	PADZZ	5910-00-299-7825	M39018-03-0734	81349	CAPACITOR, FIXED, ELE	EA	1
4	2	PADZZ	5961-00-140-0031	JAN1N5551	81349	SEMICONDUCTOR DEVIC	EA	8
4	3	PADZZ	5905-01-036-3410	RCR05G102JM	81349	RESISTOR, FIXED, COMP	EA	2
4	4	PAFZZ	5999-00-956-4973	10044DAP	07047	MOUNTING PAD, ELECTR	EA	1
4	5	PADZZ	5961-00-011-7110	JAN2N3501	81349	TRANSISTOR	EA	1
4	6	PADZZ	5905-00-280-1151	RNC55H2003FM	81349	RESISTOR, FIXED, FILM	EA	1
4	7	PADZZ	5905-01-043-0521	RJR24FW104M	81349	RESISTOR, VARIABLE, N	EA	1
4	8	PADZZ	5905-00-138-7399	RNC55H5111FS	81349	RESISTOR, FIXED, FILM	EA	2
4	9	PADZZ	5961-00-087-6047	JAN1N645	81350	SEMICONDUCTOR DEVIC	EA	1
4	10	PADZZ	5905-01-008-8429	M39015-3-010WM	81349	RESISTOR, VARIABLE, W	EA	2
4	11	PADZZ	5905-00-283-3015	RNC55H1002FM	81349	RESISTOR, FIXED, FILM	EA	2
4	12	PADZZ	5905-00-412-0760	RCR05G563JR	81349	RESISTOR, FIXED, COMP	EA	2
4	13	PADZZ	5905-00-617-5090	RCR05G333JS	81349	RESISTOR, FIXED, COMP	EA	1
4	14	PADZZ	5935-01-061-9731	M24308-24-2	81349	CONNECTOR, RECEPTACL	EA	1
4	15	PADZZ	5310-00-845-2359	NAS1291C04M	80205	NUT, SELF-LOCKING, EX	EA	4
4	16	PADZZ	5310-00-716-5612	MS51859-2	96906	WASHER, FLAT	EA	4
4	17	PADZZ		SM-B-852358	80063	SPACER, SLEEVE	EA	4
4	18	PADZZ	5340-00-232-9083	SM-C-852386	80063	LATCH SPRING	EA	4
4	19	PADZZ	5305-00-054-5652	MS51957-18	96906	SCREW, MACHINE	EA	4
4	20	XDDZZ		SM-C-852389	80063	HEAT SINK	EA	1
4	21	PADZZ	5305-00-054-6655	MS51957-31	96906	SCREW, MACHINE	EA	2
4	22	PADZZ	5940-00-050-2308	MS35431-3	96906	TERMINAL, LUG	EA	1
4	23	PADZZ	5305-00-054-6654	MS51957-30	96906	SCREW, MACHINE	EA	4
4	24	PADZZ	5310-00-054-0041	NAS620C6L	80205	WASHER, FLAT	EA	6
4	25	PADZZ	5310-00-878-9518	NAS1291C06M	80205	NUT, SELF-LOCKING, EX	EA	6
4	26	PADZZ		SM-C-852390	80063	REGULATOR	EA	1
4	27	PADZZ	5961-00-135-2143	JAN1N4982	81349	SEMICONDUCTOR DEVIC	EA	1
4	28	PADZZ	5910-00-499-7257	M39006-03-1389	81349	CAPACITOR, FIXED, ELE	EA	1
4	29	PADZZ	5905-00-506-8739	RCR32G3R3JM	81349	RESISTOR, FIXED, COMP	EA	2
4	30	PADZZ	5905-01-036-1571	RCR05G103JM	81349	RESISTOR, FIXED, COMP	EA	1

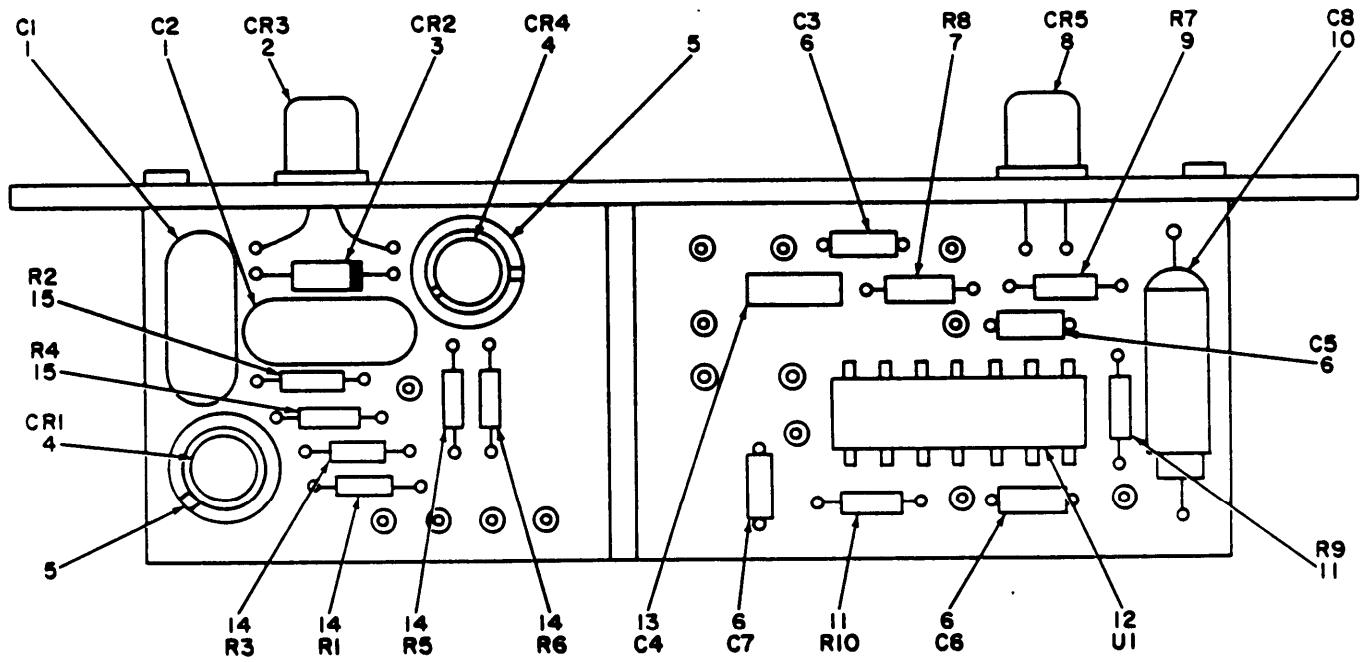


EL5FC006

Figure 5. Transmitter/Receiver Assembly A1.

SECTION II		TM11-6625-2684-30P						
(1)	(2)	(3)	(4)	(5)	(6)	(7)	(8)	
ILLUSTRATION					DESCRIPTION		QTY	
(A)	(B)	NATIONAL	PART	FSCM		USABLE ON CODE	INC	
FIG	ITEM	STOCK	NUMBER				IN	
NO	NO	NUMBER	NUMBER				UNIT	
GROUP 0103 TRANSMITTER/RECEIVER ASSEMBLY A1								
5	1	PADZZ 5310-00-880-5978	MS15795-807	96906	WASHER, FLAT	EA	4	
5	2	PADZZ 5305-01-029-8874	NAS1635-08-14	80205	SCREW, MACHINE	EA	4	
5	3	PADZZ 5860-01-070-8987	SM-A-955567	80063	APERTURE KIT	EA	1	
5	4	XDDZZ	SM-C-852368	80063	APERTURE, DIFF	EA	1	
5	5	PADZZ 5860-01-070-9121	SM-C-852400	80063	RETAINER, OPTICAL EL	EA	1	
5	6	XDDZZ	SM-C-852367	80063	APERTURE, DIFF	EA	1	
5	7	PADZZ 5860-01-070-9120	SM-C-852399	80063	RETAINER, OPTICAL EL	EA	1	
5	8	XDDZZ	SM-D-852364	80063	MOUNT ASSY	EA	1	
5	9	PADZZ 5330-01-070-9097	SM-C-852401	80063	GASKET	EA	1	
5	10	XADZZ	SM-D-852362	80063	HOUSING ASSY	EA	1	
5	11	XDDZZ	SM-D-852412	80063	INSULATOR ASSY	EA	1	
5	12	PADZZ 5340-00-139-7498	SM-B-852387	80063	LATCH, DISK	EA	2	
5	13	PADZZ 5935-00-498-5785	M24308-1-2	81349	CONNECTOR, RECEPTACL	EA	1	
5	14	XDDZZ 5975-00-074-2072	MS3367-1-9	96906	STRAP, TIEDOWN, ELECT	EA	3	
5	15	PADZZ 5935-00-057-7409	SM-B-852388-1	80063	SHELL, CONN	EA	1	
5	16	PADZZ	SM-C-852422	80063	CONNECTOR, PLUG, ELEC	EA	1	
5	17	PADZZ	SM-B-852421	80063	CONNECTOR, PLUG, ELEC	EA	4	
5	18	PADZZ 5940-00-283-5280	MS25036-106	96906	TERMINAL, LUG	EA	2	
5	19	PADZZ 5310-00-616-8660	NAS671C6	80205	NUT, PLAIN, HEXAGON	EA	1	
5	20	PADZZ 5310-00-722-5998	MS15795-805	96906	WASHER, FLAT	EA	1	
5	21	PADZZ 5940-00-050-2308	MS35431-3	96906	TERMINAL, LUG	EA	1	
5	22	PADZZ 5860-01-075-0049	SM-D-852350	80063	OVEN, TEMP CONT	EA	1	
5	23	XDDDD	SM-D-852352	80063	BOARD ASSY	EA	1	
5	24	PADZZ 5310-00-595-6211	MS15795-803	96906	WASHER, FLAT	EA	4	
5	25	PADZZ 5305-00-054-5653	MS51957-19	96906	SCREW, MACHINE	EA	4	

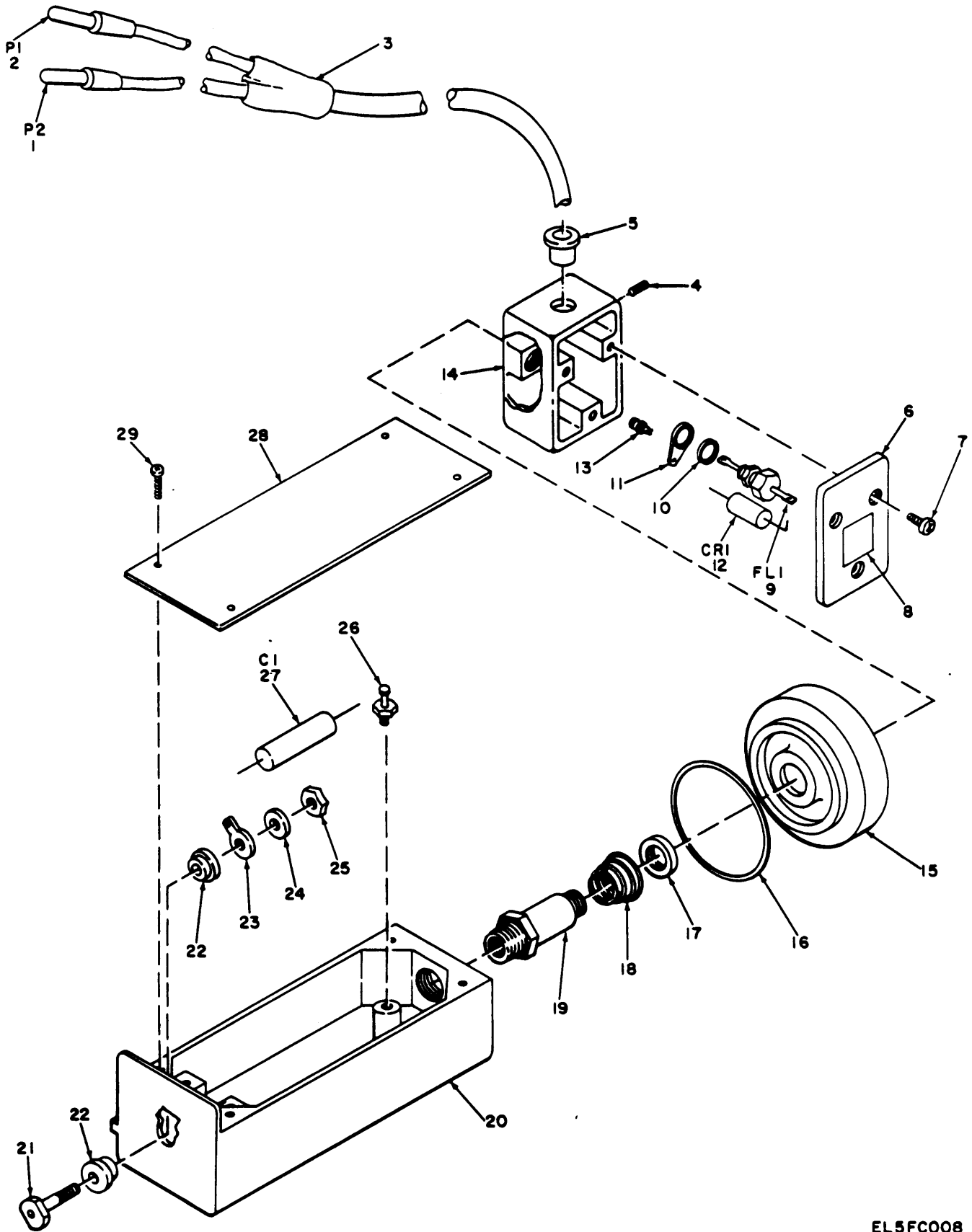




EL5FC007

Figure 6. Transmitter/Receiver Board A1A1.

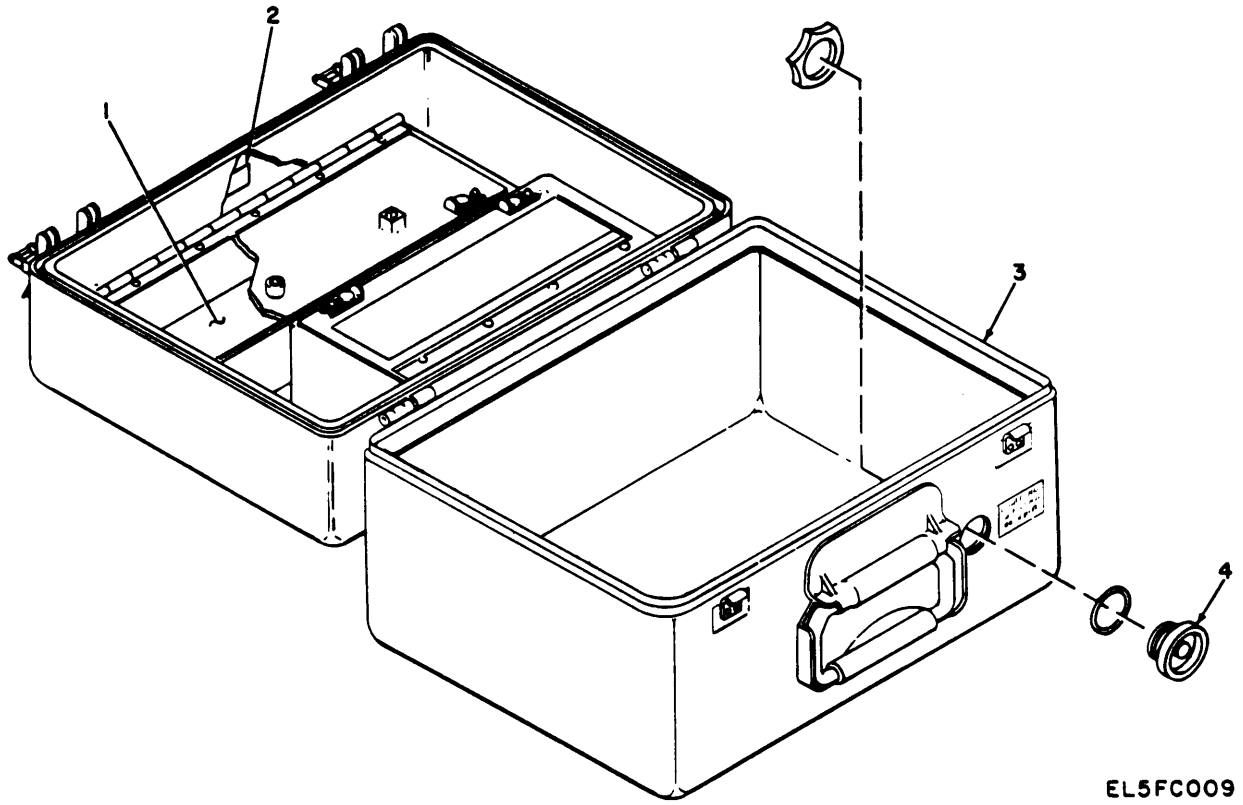
SECTION II		TM11-6625-2684-30P						
(1)	(2)	(3)	(4)	(5)	(6)	(7)	(8)	
ILLUSTRATION					DESCRIPTION		QTY	
(A)	(B)	NATIONAL	PART				INC	
FIG	ITEM	STOCK	NUMBER	FSCM		USABLE ON CODE	IN	
NO	NO	NUMBER	NUMBER				UNIT	
					GROUP 010302 TRANSMITTER/RECEIVER BD A1A1			
6	1	PADZZ 5910-00-270-4895	CMR05F361G0DM	81349	CAPACITOR, FIXED, MIC		EA 2	
6	2	PADZZ	SM-C-852403	80063	SEMICONDUCTOR DEVIC		EA 1	
6	3	PADZZ 5961-00-938-1135	JAN1N4148	81349	SEMICONDUCTOR DEVIC		EA 1	
6	4	PADZZ	SM-A-852351	80063	THYRISTOR, SW		EA 2	
6	5	PADZZ 5999-00-956-4973	10044DAP	07047	MOUNTING PAD, ELECTR		EA 2	
6	6	PADZZ 5910-01-007-5962	M39014-01-1474	81349	CAPACITOR, FIXED, CER		EA 4	
6	7	PADZZ 5905-01-036-1576	RCR05G203JM	81349	RESISTOR, FIXED, COMP		EA 1	
6	8	PADZZ	SM-C-852402	80063	DIODE		EA 1	
6	9	PADZZ 5905-00-458-9346	RCR05G104JM	81349	RESISTOR, FIXED, COMP		EA 1	
6	10	PADZZ 5910-00-546-4948	M39003-01-2258	81349	CAPACITOR, FIXED, ELE		EA 1	
6	11	PADZZ 5905-00-568-7023	RCR05G561JM	81349	RESISTOR, FIXED, COMP		EA 2	
6	12	PADZZ 5962-01-009-5492	SM-A-852404	80063	IC		EA 1	
6	13	PADZZ	M39014-02-1216	81349	CAPACITOR, FIXED, CER		EA 1	
6	14	PADZZ 5905-00-568-7011	RCR05G221JM	81349	RESISTOR, FIXED, COMP		EA 4	
6	15	PADZZ 5905-00-412-0759	RCR05G514JS	81349	RESISTOR, FIXED, COMP		EA 2	



EL5FC008

Figure 7. Cable Assembly Adapter.

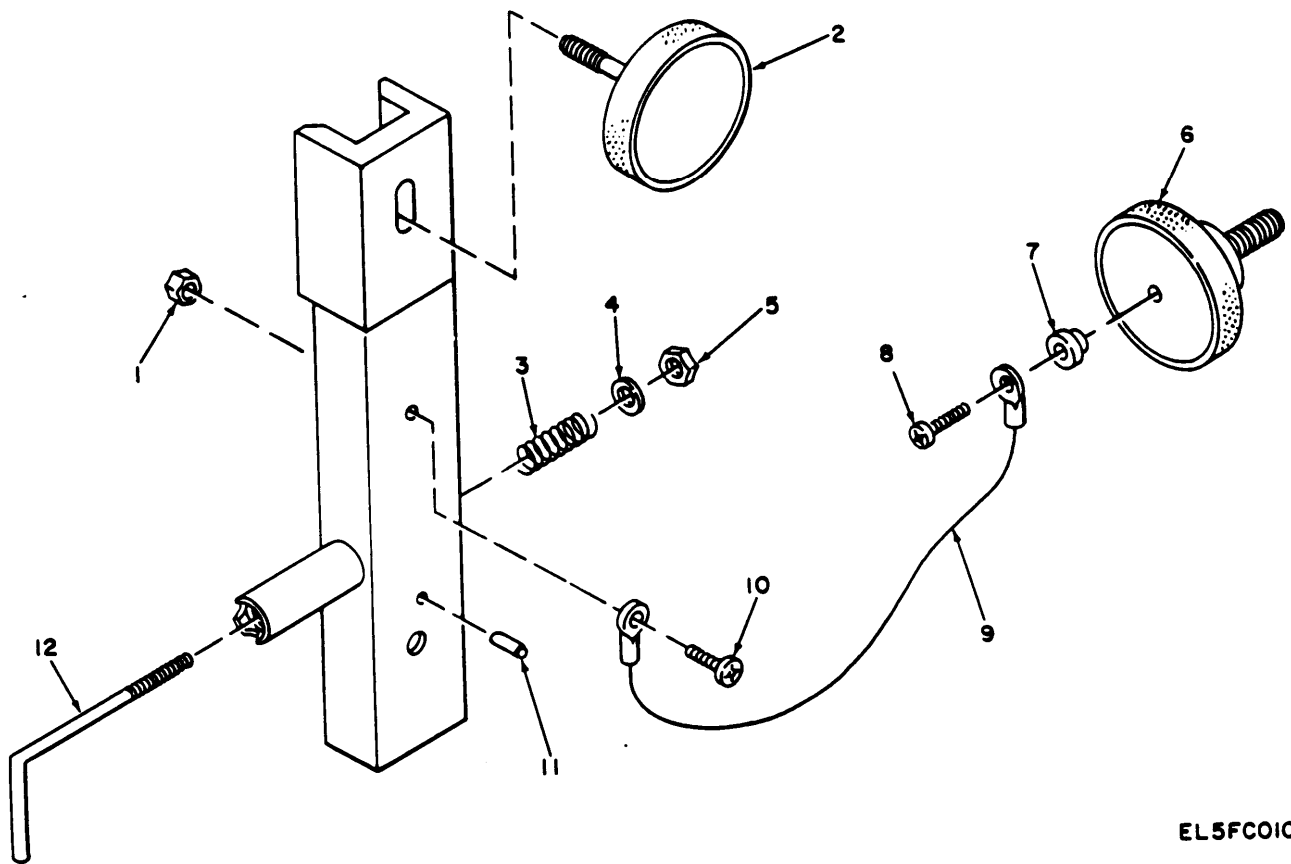
SECTION II		TM11-6625-2684-30P						
(1)	(2)	(3)	(4)	(5)	(6)	(7)	(8)	
ILLUSTRATION					DESCRIPTION		QTY	
(A)	(B)	NATIONAL	PART	FSCM		USABLE ON CODE	INC	
FIG	ITEM	STOCK	NUMBER				IN	
NO	NO	NUMBER	NUMBER				UNIT	
					GROUP 02 CABLE ASSEMBLY, ADAPTER			
7	1	PAFZZ 5935-00-928-8167	SM-A-588239-2	80063	CONNECTOR, PLUG, ELEC	EA	1	
7	2	PAFZZ 5935-00-905-4832	SM-A-588239-1	80063	PLUG, TIP	EA	1	
7	3	XDFZZ	SM-C-852445	80063	TRANSITION	EA	1	
7	4	PADZZ 5305-01-071-9375	SM-C-955557	80063	SETSCREW	EA	1	
7	5	XDFZZ 5365-01-074-5933	SM-B-537326-3	80063	STRAIN RELIEF	EA	1	
7	6	XDFZZ	SM-C-955563	80063	COVER	EA	1	
7	7	PAFZZ 5305-00-993-9189	MS24693-C2	96906	SCREW, MACHINE	EA	3	
7	8	PAOZZ 7690-01-074-5965	SM-C-852288	80063	LABEL	EA	1	
7	9	PAFZZ 5915-00-513-1999	SM-C-852013	80063	FLTER, EMI	EA	1	
7	10	PAFZZ 5310-00-543-2740	MS35333-74	96906	WASHER, LOCK	EA	1	
7	11	PAFZZ 5310-00-543-2740	MS35333-74	96906	WASHER, LOCK	EA	1	
7	12	PAFZZ 5961-00-421-3002	JAN1N5550	81349	SEMICONDUCTOR DEVIC	EA	1	
7	13	PAFZZ	SM-C-955559	80063	TERMINAL	EA	1	
7	14	XDDZZ	SM-D-955561	80063	BOX	EA	1	
7	15	XDDZZ	SM-D-852147	80063	CAP, THREAD MAC	EA	1	
7	16	PAFZZ 5330-00-582-2571	MS9020-24	96906	PACKING, PREFORMED	EA	1	
7	17	XDFZZ	SM-C-852017	80063	SEAL, SHAFT	EA	1	
7	18	XDDZZ	SM-C-852153	80063	SPRING, CONICAL	EA	1	
7	19	XDDZZ	SM-C-955556	80063	SHAFT, CONVERTER	EA	1	
7	20	XADZZ	SM-D-852151	80063	CHASSIS, POW AD	EA	1	
7	21	PADZZ 5940-01-074-5935	SM-C-852150	80063	TERMINAL, OUTPUT	EA	1	
7	22	PAFZZ 5310-01-074-5982	SM-C-955558	80063	WASHER, SHOULDERED	EA	2	
7	23	PAFZZ 5940-00-614-0537	MS35431-1	96906	TERMINAL, LUG	EA	1	
7	24	PAFZZ 5310-00-058-3599	MS35335-57	96906	WASHER, LOCK	EA	1	
7	25	PAFZZ 5310-00-208-3786	NAS671C4	80205	NUT, PLAIN, HEXAGON	EA	1	
7	26	PAFZZ 5940-00-905-5016	MS17172-6	96906	TERMINAL, STUD	EA	1	
7	27	PAFZZ 5910-01-027-1376	M39006-09-8392	81349	CAPACITOR, FIXED, ELE	EA	1	
7	28	XDFZZ	SM-D-852138	80063	COVER, CHASSIS	EA	1	
7	29	PAFZZ 5305-00-054-5648	MS51957-14	96906	SCREW, MACHINE	EA	4	



EL5FC009

Figure 8. Combination Case.

SECTION II				TM11-6625-2684-30P			
(1)	(2)	(3)	(4)	(5)	(6)	(7)	(8)
ILLUSTRATION							
(A)	(B)	NATIONAL			DESCRIPTION		QTY
FIG	ITEM	STOCK	PART	FSCM		USABLE ON CODE	INC
NO	NO	CODE	NUMBER				IN
							UNIT
					GROUP 03 COMBINATION CASE		
8	1	XDFZZ	M5847-60DURG12TH K	96906	RUBBER		FT 1
8	2	XDFZZ	SM-D-852418	80063	PLATE IDENT		EA 1
8	3	PAFZZ	SM-C-882449	80063	GASKET		EA 1
8	4	PAFZZ	4820-00-898-3003 SM-C-882450	80063	VALVE, RELIEF		EA 1



EL5FC010

Figure 9. Alignment Bracket Assembly.

SECTION II						TM11-6625-2684-30P		
(1)	(2)	(3)	(4)	(5)	(6)	(7)	(8)	
ILLUSTRATION								
(A)	(B)	NATIONAL	PART		DESCRIPTION		QTY	
FIG	ITEM	STOCK	NUMBER	FSCM		USABLE ON CODE	INC	
NO	NO	CODE	NUMBER				IN	
							UNIT	
GROUP 04 ALIGNMENT BRACKET ASSEMBLY								
9	1	PAFZZ	5310-00-878-9518	NAS1291C06M	80205	NUT, SELF-LOCKING, EX	EA	1
9	2	PAFZZ	5355-01-070-5421	SM-B-852413	80063	KNOB, LASER MOUNTING	EA	1
9	3	PAFZZ	5360-00-113-1514	MS24585C63	96906	SPRING, HELICAL, COMP	EA	1
9	4	PAFZZ	5310-00-595-6211	MS15795-803	96906	WASHER, FLAT	EA	1
9	5	PAFZZ	5310-00-845-2359	NAS1291C04M	80205	NUT, SELF-LOCKING, EX	EA	1
9	6	PAFZZ	5355-01-070-8991	SM-B-852392	80063	KNOB, BRACKET MOUNTI	EA	1
9	7	PAFZZ	5310-01-070-5550	SM-C-852048	80063	WASHER, SHOULDERED	EA	1
9	8	PAFZZ	5305-00-054-5641	MS51957-7	96906	SCREW, MACHINE	EA	1
9	9	PAFZZ		SM-C-852434	80043	CABLE, KNOB	EA	1
9	10	PAFZZ	5305-00-054-6652	MS51957-28	96906	SCREW, MACHINE	EA	1
9	11	PAFZZ	5315-00-410-4853	MS51923-152	96906	PIN, SPRING	EA	1
9	12	PAFZZ	5860-01-074-6295	SM-B-852393	80063	ARM, INTERLOCK DEFEA	EA	1



## NATIONAL STOCK NUMBER AND PART NUMBER INDEX

NOTE: LATEST NATIONAL STOCK NUMBER AND PART NUMBER ASSIGNMENTS ARE INCLUDED AT END OF INDEX.

STOCK NUMBER	FIGURE NO	ITEM NO	STOCK NUMBER	FIGURE NO	ITEM NO
5961-00-011-7110	4	5	5940-00-614-0537	7	23
5940-00-050-2308	4	22	5310-00-616-8660	5	19
5940-00-050-2308	5	21	5905-00-617-5090	4	13
5305-00-051-0227	2	25	5310-00-619-1148	1	3
5310-00-054-0041	4	24	5310-00-619-1148	2	9
5305-00-054-5641	9	8	5355-00-682-6753	2	11
5305-00-054-5648	2	18	5310-00-716-5612	3	25
5305-00-054-5648	7	29	5310-00-716-5612	4	16
5305-00-054-5651	2	23	5310-00-722-5998	2	33
5305-00-054-5652	2	52	5310-00-722-5998	5	20
5305-00-054-5652	3	24	5935-00-726-0708	2	53
5305-00-054-5652	4	19	5340-00-753-3456	2	24
5305-00-054-5653	5	25	5305-00-814-1707	2	2
5305-00-054-6651	2	51	5310-00-845-2359	2	20
5305-00-054-6652	9	10	5310-00-845-2359	3	26
5305-00-054-6654	4	23	5310-00-845-2359	4	15
5305-00-054-6655	4	21	5310-00-845-2359	9	5
5305-00-054-6656	2	43	5310-00-845-5030	2	36
5305-00-054-6658	2	58	5310-00-878-9518	2	34
5935-00-057-7409	5	15	5310-00-878-9518	4	25
5310-00-058-3599	7	24	5310-00-878-9518	9	1
5340-00-060-5386	2	26	5310-00-880-5978	2	37
5975-00-074-2072	5	14	5310-00-880-5978	5	1
5305-00-079-5835	2	47	6240-00-892-4420	2	49
5961-00-087-6047	4	9	5310-00-894-3638	2	17
5360-00-113-1514	9	3	4820-00-898-3003	8	4
5961-00-135-2143	4	27	5330-00-903-7187	2	54
5905-00-138-7399	4	8	5935-00-905-4832	7	2
5340-00-139-7498	5	12	5940-00-905-5016	7	26
5961-00-140-0031	4	2	5940-00-913-8093	3	12
6240-00-155-7857	2	12	5961-00-925-3777	3	13
5905-00-180-8301	3	18	5935-00-928-8167	7	1
5905-00-197-0224	3	16	5961-00-938-1135	3	21
5310-00-208-3786	7	25	5961-00-938-1135	6	3
5961-00-226-8584	3	17	5999-00-956-4973	3	14
5340-00-232-9083	3	28	5999-00-956-4973	4	4
5340-00-232-9083	4	18	5999-00-956-4973	6	5
6210-00-246-4888	2	48	5940-00-983-6051	2	30
5910-00-270-4895	6	1	5340-00-988-3210	2	22
5905-00-280-1151	4	6	5305-00-993-9189	7	7
5905-00-283-3015	4	11	5910-01-007-5962	6	6
5940-00-283-5280	2	29	5905-01-008-8429	3	3
5940-00-283-5280	5	18	5905-01-008-8429	4	10
5910-00-299-7825	4	1	5962-01-009-5492	6	12
5962-00-318-2223	3	9	5910-01-027-1258	3	8
5962-00-348-2717	3	4	5910-01-027-1278	3	22
6210-00-400-2808	2	50	5910-01-027-1376	7	27
5305-00-403-3463	1	4	5305-01-029-8874	5	2
5305-00-403-3463	2	8	5905-01-036-1571	3	6
5305-00-403-3465	2	40	5905-01-036-1571	4	30
5315-00-410-4853	9	11	5905-01-036-1576	3	7
5905-00-412-0759	6	15	5905-01-036-1576	6	7
5905-00-412-0760	4	12	5905-01-036-3410	3	15
5961-00-421-3002	7	12	5905-01-036-3410	4	3
5905-00-458-9346	6	9	5905-01-043-0521	4	7
5905-00-481-5254	3	20	6150-01-058-6591	1	1
5935-00-498-5785	5	13	5935-01-061-9731	4	14
5910-00-499-7257	4	28	5915-01-068-0995	2	28
5905-00-506-8739	4	29	5355-01-070-5421	9	2
5915-00-513-1999	7	9	5310-01-070-5550	9	7
6210-00-519-0448	2	14	5365-01-070-8071	2	3
5310-00-543-2740	7	10	5365-01-070-8072	2	5
5310-00-543-2740	7	11	5940-01-070-8099	2	32
5340-00-543-3931	2	35	5995-01-070-8107	2	45
5910-00-546-4948	3	11	5860-01-070-8130	2	4
5910-00-546-4948	6	10		2	44
5310-00-550-3715	2	19	5860-01-070-8987	5	3
6210-00-553-1076	2	59	5340-01-070-8988	2	38
5905-00-568-6954	3	19	5860-01-070-8989	1	5
5905-00-568-7011	6	14	5860-01-070-8990	1	2
5905-00-568-7023	6	11	5355-01-070-8991	9	6
5930-00-578-2353	2	13	5330-01-070-9097	5	9
5330-00-582-2571	7	16	5860-01-070-9120	5	7
5935-00-593-9415	3	23	5860-01-070-9121	5	5
5905-00-594-2640	3	29	5860-01-070-9134	2	42
5910-00-594-7766	3	1	7690-01-071-9347	2	16
5310-00-595-6211	2	21	5305-01-071-9375	7	4
5310-00-595-6211	5	24	5365-01-074-5933	7	5
5310-00-595-6211	9	4	5940-01-074-5935	7	21
5940-00-614-0537	2	56	7690-01-074-5965	7	8

STOCK NUMBER	FIGURE NO	ITEM NO	STOCK NUMBER	FIGURE NO	ITEM NO		
5310-01-074-5982	7	22	5995-01-074-6332	2	46		
5860-01-074-6293	2	1	5860-01-075-0049	5	22		
5860-01-074-6295	9	12	5940-01-075-0050	2	6		
PART NUMBER	FSCM	FIG NO	ITEM NO	PART NUMBER	FSCM	FIG NO	ITEM NO
CMR05F361G0DM	81349	6	1	M24308-24-3	81349	3	23
CMR07F103J0DM	81349	3	1	M38510-00104BCB	81349	3	9
JAN1N4148	81349	3	21	M38510-01203BEB	81349	3	4
JAN1N4148	81349	6	3	M39003-01-2258	81349	3	11
JAN1N4982	81349	4	27	M39003-01-2258	81349	6	10
JAN1N5550	81349	7	12	M39006-03-1389	81349	4	28
JAN1N5551	81349	4	2	M39006-09-8392	81349	7	27
JAN1N645	81350	4	9	M39014-01-1213	81349	3	5
JAN2N2222	81349	3	17	M39014-01-1455	81349	3	22
JAN2N2907A	81349	3	13	M39014-01-1473	81349	3	8
JAN2N3501	81349	4	5	M39014-01-1474	81349	6	6
LC33RN2	81349	2	48	M39014-02-1216	81349	6	13
LH88-1	81349	2	50	M39015-3-010WM	81349	3	3
MS15795-803	96906	2	21	M39015-3-010WM	81349	4	10
MS15795-803	96906	5	24	M39018-03-0734	81349	4	1
MS15795-803	96906	9	4	M55155-29-5	81349	3	12
MS15795-805	96906	2	33	M5847-60DURGL2THK	96906	8	1
MS15795-805	96906	5	20	NAS1291C04M	80205	2	20
MS15795-807	96906	2	37	NAS1291C04M	80205	3	26
MS15795-807	96906	5	1	NAS1291C04M	80205	4	15
MS15795-808	96906	1	3	NAS1291C04M	80205	9	5
MS15795-808	96906	2	9	NAS1291C06M	80205	2	34
MS17172-6	96906	7	26	NAS1291C06M	80205	4	25
MS24585C63	96906	9	3	NAS1291C06M	80205	9	1
MS24693-C2	96906	7	7	NAS1291C08M	80205	2	36
MS24693C272	96906	2	25	NAS1291C3M	80205	2	17
MS24693C50	96906	2	47	NAS1635-08-10	80205	2	40
MS25036-106	96906	2	29	NAS1635-08-14	80205	5	2
MS25036-106	96906	5	18	NAS1635-3-12	80205	1	4
MS25041-6	96906	2	14	NAS1635-3-12	80205	2	8
MS25041-7	96906	2	59	NAS620C6L	80205	4	24
MS25089-4CR	96906	2	13	NAS662C2R4	80205	2	2
MS25237-32B	96906	2	12	NAS671C4	80205	7	25
MS25252C7A	96906	2	49	NAS671C6	80205	5	19
MS25281R2	96906	2	24	RCR05G101JM	81349	3	18
MS25281R3	96906	2	35	RCR05G102JM	81349	3	15
MS25281R4	96906	2	22	RCR05G102JM	81349	4	3
MS2548-2	96906	1	1	RCR05G103JM	81349	3	6
MS3102R10SL3P	96906	2	53	RCR05G103JM	81349	4	30
MS3367-1-9	96906	5	14	RCR05G104JM	81349	6	9
MS35333-70	96906	2	19	RCR05G203JM	81349	3	7
MS35333-74	96906	7	10	RCR05G203JM	81349	6	7
MS35333-74	96906	7	11	RCR05G221JM	81349	6	14
MS35335-57	96906	7	24	RCR05G330JM	81349	3	19
MS35431-1	96906	2	56	RCR05G333JTS	81349	4	13
MS35431-1	96906	7	23	RCR05G363JM	81349	3	20
MS35431-3	96906	4	22	RCR05G511JR	81349	3	16
MS35431-3	96906	5	21	RCR05G514JTS	81349	6	15
MS39087-3	96906	2	26	RCR05G561JM	81349	6	11
MS51859-2	96906	3	25	RCR05G563JTR	81349	4	12
MS51859-2	96906	4	16	RCR32G3R3JM	81349	4	29
MS51923-152	96906	9	11	RJR24FW104M	81349	4	7
MS51957-14	96906	2	18	RJR24FW105P	81349	3	29
MS51957-14	96906	7	29	RNC55H1002FM	81349	4	11
MS51957-17	96906	2	23	RNC55H2003FM	81349	4	6
MS51957-18	96906	2	52	RNC55H5111FS	81349	4	8
MS51957-18	96906	3	24	SM-A-588239-1	80063	7	2
MS51957-18	96906	4	19	SM-A-588239-2	80063	7	1
MS51957-19	96906	5	25	SM-A-852072	80063	2	4
MS51957-27	96906	2	51	SM-A-852351	80063	6	4
MS51957-28	96906	9	10	SM-A-852359	80063	3	2
MS51957-30	96906	4	23	SM-A-852404	80063	6	12
MS51957-31	96906	4	21	SM-A-955567	80063	5	3
MS51957-32	96906	2	43	SM-B-537326-3	80063	7	5
MS51957-34	96906	2	58	SM-B-852358	80063	3	27
MS51957-7	96906	9	8	SM-B-852358	80063	4	17
MS52000-2	96906	2	54	SM-B-852376	80063	3	10
MS9020-24	96906	7	16	SM-B-852387	80063	5	12
MS91528-1F1B	96906	2	11	SM-B-852388-1	80063	5	15
M15733-27-0017	81349	2	28	SM-B-852392	80063	9	6
M24308-1-2	81349	5	13	SM-B-852393	80063	9	12
M24308-24-2	81349	4	14	SM-B-852413	80063	9	2

PART NUMBER	FSCM	FIG NO	ITEM NO	PART NUMBER	FSCM	FIG NO	ITEM NO
SM-B-852421	80063	5	17	SM-C-882450	80063	8	4
SM-B-852424	80063	2	6	SM-C-937798	80063	2	3
SM-B-955591	80063	2	31	SM-C-937799	80063	2	5
SM-C-852013	80063	7	9	SM-C-955556	80063	7	19
SM-C-852017	80063	7	17	SM-C-955557	80063	7	4
SM-C-852048	80063	9	7	SM-C-955558	80063	7	22
SM-C-852150	80063	7	21	SM-C-955559	80063	7	13
SM-C-852153	80063	7	18	SM-C-955563	80063	7	6
SM-C-852288	80063	7	8	SM-D-852138	80063	7	28
SM-C-852367	80063	5	6	SM-D-852147	80063	7	15
SM-C-852368	80063	5	4	SM-D-852151	80063	7	20
SM-C-852375	80063	2	1	SM-D-852350	80063	5	22
SM-C-852377	80063	2	45	SM-D-852352	80063	5	23
SM-C-852385	80063	2	46	SM-D-852361	80063	2	55
SM-C-852386	80063	3	28	SM-D-852362	80063	5	10
SM-C-852386	80063	4	18	SM-D-852364	80063	5	8
SM-C-852389	80063	4	20	SM-D-852371	80063	2	41
SM-C-852390	80063	4	26	SM-D-852374	80063	1	2
SM-C-852395	80063	2	7	SM-D-852378	80063	2	44
SM-C-852399	80063	5	7	SM-D-852381	80063	2	42
SM-C-852400	80063	5	5	SM-D-852384	80063	1	7
SM-C-852401	80063	5	9	SM-D-852412	80063	5	11
SM-C-852402	80063	6	8	SM-D-852415	80063	2	57
SM-C-852403	80063	6	2	SM-D-852416	80063	2	15
SM-C-852414	80063	2	27	SM-D-852418	80063	8	2
SM-C-852417	80063	2	39	SM-D-852433	80063	1	5
SM-C-852422	80063	5	16	SM-D-852483	80063	1	6
SM-C-852423	80063	2	38	SM-D-955561	80063	7	14
SM-C-852425	80063	2	32	10044DAP	07047	3	14
SM-C-852434	80063	9	9	10044DAP	07047	4	4
SM-C-852445	80063	7	3	10044DAP	07047	6	5
SM-C-882399	80063	2	16	37TB10	81349	2	30
SM-C-882449	80063	8	3				

## LATEST NATIONAL STOCK NUMBER ASSIGNMENT

STOCK NUMBER	FIGURE NO	ITEM NO
5310-00-543-5933	2	10

## LATEST PART NUMBER ASSIGNMENTS

PART NUMBER	FSCM	FIG NO	ITEM NO
MS35333-73	96906	2	10
SM-C-9			



# SOMETHING WRONG WITH THIS MANUAL?

THEN...JOT DOWN THE DOPE ABOUT IT ON THIS FORM, TEAR IT OUT, FOLD IT AND DROP IT IN THE MAIL!

FROM: (YOUR UNIT'S COMPLETE ADDRESS)

Commander  
Stateside Army Depot  
ATTN: AMSTA-US  
Stateside, N.J. 07703

DATE 4 April 1978

PUBLICATION NUMBER

TM 11-5840-340-14&P

DATE

23 Jan 74

TITLE

Radar Set AN/PLC-76

BE EXACT...PIN-POINT WHERE IT IS

PAGE NO.	PARA-GRAPH	FIGURE NO.	TABLE NO.
----------	------------	------------	-----------

2-25	2-28		
------	------	--	--

3-10	3-3		
------	-----	--	--

5-6	5-8		
-----	-----	--	--

E-5			
-----	--	--	--

E-8		E-3	
-----	--	-----	--

E-9			
-----	--	--	--

IN THIS SPACE TELL WHAT IS WRONG AND WHAT SHOULD BE DONE ABOUT IT:

Recommend that the installation antenna alignment procedure be changed throughout to specify a 2° IFF antenna lag rather than 1°.

REASON: Experience has shown that with only a 1° lag, the antenna servo system is too sensitive to wind gusting in excess of 25 knots, and has a tendency to rapidly accelerate and decelerate as it hunts, causing strain to the drive train. Hunting is minimized by adjusting the lag to 2° without degradation of operation.

3-1	Item 5, Function column. Change "2 db" to "3db."
-----	--

REASON: The adjustment procedure for the TRANS POWER FAULT indicator calls for a 3 db (500 watts) adjustment to light the TRANS POWER FAULT indicator.

Add new step f.1 to read, "Replace cover plate removed in step e.1, above."

REASON: To replace the cover plate.

For item 2, change the NSN to read: 5835-00-134-9186.

REASON: Accuracy.

Identify the cover on the junction box (item no. 5).

REASON: It is a separate item and is not called out on figure 19.

Add the cover of the junction box as an item in the listing for figure 19.

REASON: Same as above.

TYPED NAME, GRADE OR TITLE, AND TELEPHONE NUMBER

SSG I. M. DeSpirito 999-1776

SIGN HERE:

*SSA I. M. DeSpirito*

DA FORM 2028-2  
1 AUG 74

P.S.--IF YOUR OUTFIT WANTS TO KNOW ABOUT YOUR MANUAL "FIND" MAKE A CARBON COPY OF THIS AND GIVE IT TO YOUR HEADQUARTERS.

TEAR ALONG DOTTED LINE

RECOMMENDED CHANGES TO EQUIPMENT TECHNICAL MANUALS

# SOMETHING WRONG WITH THIS MANUAL?



THEN... JOT DOWN THE DOPE ABOUT IT ON THIS FORM, TEAR IT OUT, FOLD IT AND DROP IT IN THE MAIL!

FROM: (YOUR UNIT'S COMPLETE ADDRESS)

DATE

PUBLICATION NUMBER

TM 11-6625-2684-30P

DATE

8 Sep 79

TITLE

TEST SET, LASER INFRARED OBSERVATION DEVICE TS-3620/GVS-5

BE EXACT... PIN-POINT WHERE IT IS

IN THIS SPACE TELL WHAT IS WRONG AND WHAT SHOULD BE DONE ABOUT IT:

PAGE NO.	PARA-GRAPH	FIGURE NO.	TABLE NO.

TEAR ALONG DOTTED LINE

TYPED NAME, GRADE OR TITLE, AND TELEPHONE NUMBER

SIGN HERE:

DA FORM 2028-2  
1 AUG 74

P.S.--IF YOUR OUTFIT WANTS TO KNOW ABOUT YOUR MANUAL "FIND," MAKE A CARBON COPY OF THIS AND GIVE IT TO YOUR HEADQUARTERS.

FILL IN YOUR  
UNIT'S ADDRESS

FOLD BACK

DEPARTMENT OF THE ARMY

OFFICIAL BUSINESS

PENALTY FOR PRIVATE USE, \$300

POSTAGE AND FEES PAID  
DEPARTMENT OF THE ARMY  
DOD-314



Commander  
US Army Communications and  
Electronics Materiel Readiness Command  
ATTN: DRSEL-ME-MQ  
Fort Monmouth, New Jersey 07703

TEAR ALONG DOTTED LINE

FOLD BACK



# SOMETHING WRONG WITH THIS MANUAL?

THEN... JOT DOWN THE DOPE ABOUT IT ON THIS FORM, TEAR IT OUT, FOLD IT AND DROP IT IN THE MAIL!

FROM: (YOUR UNIT'S COMPLETE ADDRESS)

DATE

PUBLICATION NUMBER: TM 11-6625-2684-30P      DATE: 8 Sep 79      TITLE: Test Set, Laser Infrared Observation Device TS-3620/GVS-5

BE EXACT... PIN-POINT WHERE IT IS				IN THIS SPACE TELL WHAT IS WRONG AND WHAT SHOULD BE DONE ABOUT IT:
PAGE NO.	PARA-GRAPH	FIGURE NO.	TABLE NO.	

TEAR ALONG DOTTED LINE

TYPED NAME, GRADE OR TITLE, AND TELEPHONE NUMBER      SIGN HERE:

FILL IN YOUR  
UNIT'S ADDRESS

FOLD BACK

DEPARTMENT OF THE ARMY

OFFICIAL BUSINESS

PENALTY FOR PRIVATE USE, \$300

POSTAGE AND FEES PAID  
DEPARTMENT OF THE ARMY  
DOD-314



Commander  
US Army Communications and  
Electronics Materiel Readiness Command  
ATTN: DRSEL-ME-MQ  
Fort Monmouth, New Jersey 07703

TEAR ALONG DOTTED LINE

FOLD BACK

REVERSE OF DA FORM 2025-2



By Order of the Secretary of the Army:

E. C. MEYER  
General, United States Army  
Chief of Staff

Official:

J. C. PENNINGTON  
*Major General, United States Army,*  
*The Adjutant General*

DISTRIBUTION:

Active Army

HISA (Ft Monmouth) (21)  
USAINSCOM (2)  
COE (2)  
TSG (1)  
USAARENBD (1)  
DARCOM (1)  
TRADOC (2)  
OS Maj Cmd (4)  
TECOM (2)  
USACC (4)  
MDW (1)  
Armies (2)  
Corps (2)  
Svc Colleges (1)  
USASIGS (5)  
USAADS (2)  
USAFAS (2)  
USAARMS (2)  
USAIS (2)  
USAES (2)

USAICS (3)  
MAAG (1)  
USARMIS (1)  
USAERDAA (1)  
USAERDAW (1)  
Ft Gordon (10)  
Ft Carson (5)  
Army Dep (1) except  
    LBAD (14)  
    SAAD (30)  
    TOAD (14)  
    SHAD (3)  
Ft Gillem (10)  
USA Dep (1)  
SigSec USA Dep (1)  
Ft Richardson (CERCOM Ofc) (2)  
Units org under fol TOE:  
    29-207 (2)  
    29-610 (2)

NG: None

USAR: None

For explanation of abbreviations used see, AR 310-50.

DEPARTMENT OF THE ARMY  
US ARMY AG PUBLICATIONS CENTER  
1655 WOODSON ROAD  
ST. LOUIS, MISSOURI 63114

OFFICIAL BUSINESS  
PENALTY FOR PRIVATE USE, \$300

POSTAGE AND FEES PAID  
DEPARTMENT OF THE ARMY  
DOD 314  
FOURTH CLASS

